



TRAFFICGUARD®, Inc.

P.O. BOX 201

Geneva, IL 60134

PHONE 877-727-7347

FAX 800-814-7194

www.trafficguard.net



GENERAL WARNINGS AND CAUTIONARY STATEMENTS **COLLAPSIBLE BOLLARDS**

In order to safely and effectively use any TrafficGuard® product, please read and understand the General Warnings and Cautionary Statements contained below. If you have any questions about any of these General Warnings and Cautionary Statements, or about any aspect of TrafficGuard® products or literature, please contact TrafficGuard® at 877-727-7347, or email at sales@trafficguard.net.



Bollard selection and placement based on vehicle weight, speed and other site specific factors to be determined by owner.



Failure to utilize TrafficGuard® authorized parts, or modifications to the TrafficGuard® products, or failure to follow the recommended installation procedures, will result in your warranty being null and void.



Read and fully understand the installation instructions before attempting to install any TrafficGuard® bollard product.



Substitution of components may impair the proper function of TrafficGuard® bollards products. If you need replacement parts, please contact TrafficGuard® at the number and email above.



Always ensure that the lock pin is locked into place in the upright position with all collapsible bollards.



WARNING: Failure to return collapsible bollard to upright, locked position immediately after use poses a significant hazard.



Replacement lock pins are available for purchase at TrafficGuard®. For purchase of replacement lock pins or other components, please contact TrafficGuard® at the number or email above.



CAUTION: Lock pin must always be secured with padlock when bollard is in upright position.



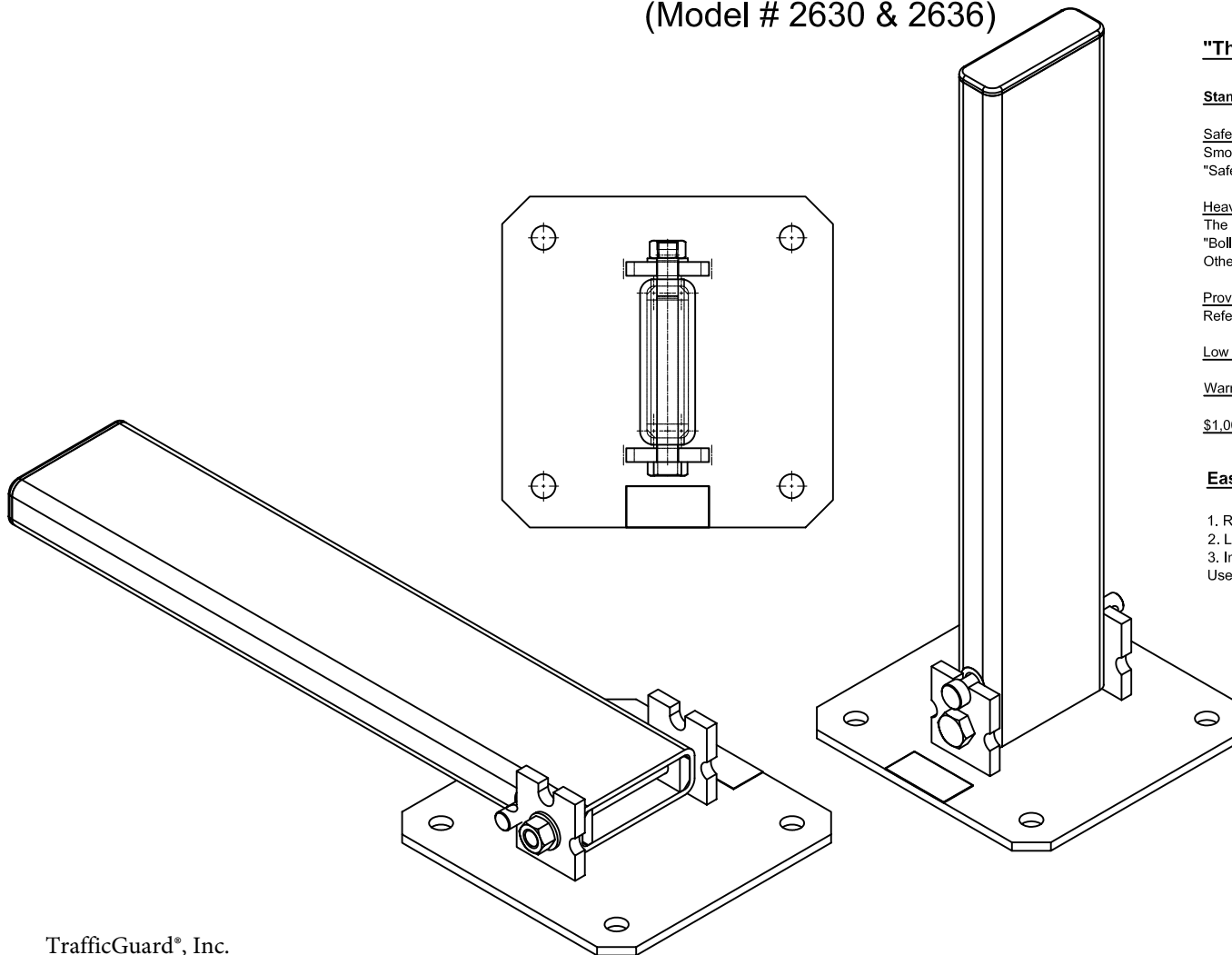
For maximum effectiveness of TrafficGuard® bollard products, be sure to properly maintain bollards by replacing any damaged, corroded or missing components, and reapply paint as required to maximize visibility. Failure to properly maintain product can negatively impact the bollards performance over time.



To ensure visibility of bollards, be sure to apply all decals that are provided with the product, and in the manner recommended by TrafficGuard®

If in doubt **CALL** TrafficGuard® 877-727-7347

Two-Way Collapsible Bollard (Model # 2630 & 2636)



"The Two-Way Collapsible Bollard"

Standard Features Include:

Safety

Smooth Surface bollard post at 30" or 36" height and painted with highly durable "Safety Yellow" finish are standard for high visibility and no sharp edges.

Heavy Duty:

The 2630 or 2636 shall be installed with the appropriate detail per "Bollard Post Concrete Anchorage Detail"
Other anchorage systems may cause premature failure.

Proven Performance:

References Available Upon Request

Low Maintenance

Warranty

\$1,000,000 Liability Coverage

Ease of Use in Three Easy Reversible Steps

1. Remove the Padlock and Lock Pin.
 2. Lower the 2x6 Bollard Post
 3. Install the Lock Pin and Padlock
- Use the reverse procedure to raise the bollard post.

TrafficGuard®, Inc.
PO Box 201, Geneva, IL 60134
Phone: 877-727-7347
Fax: 800-814-7194
www.trafficguard.net

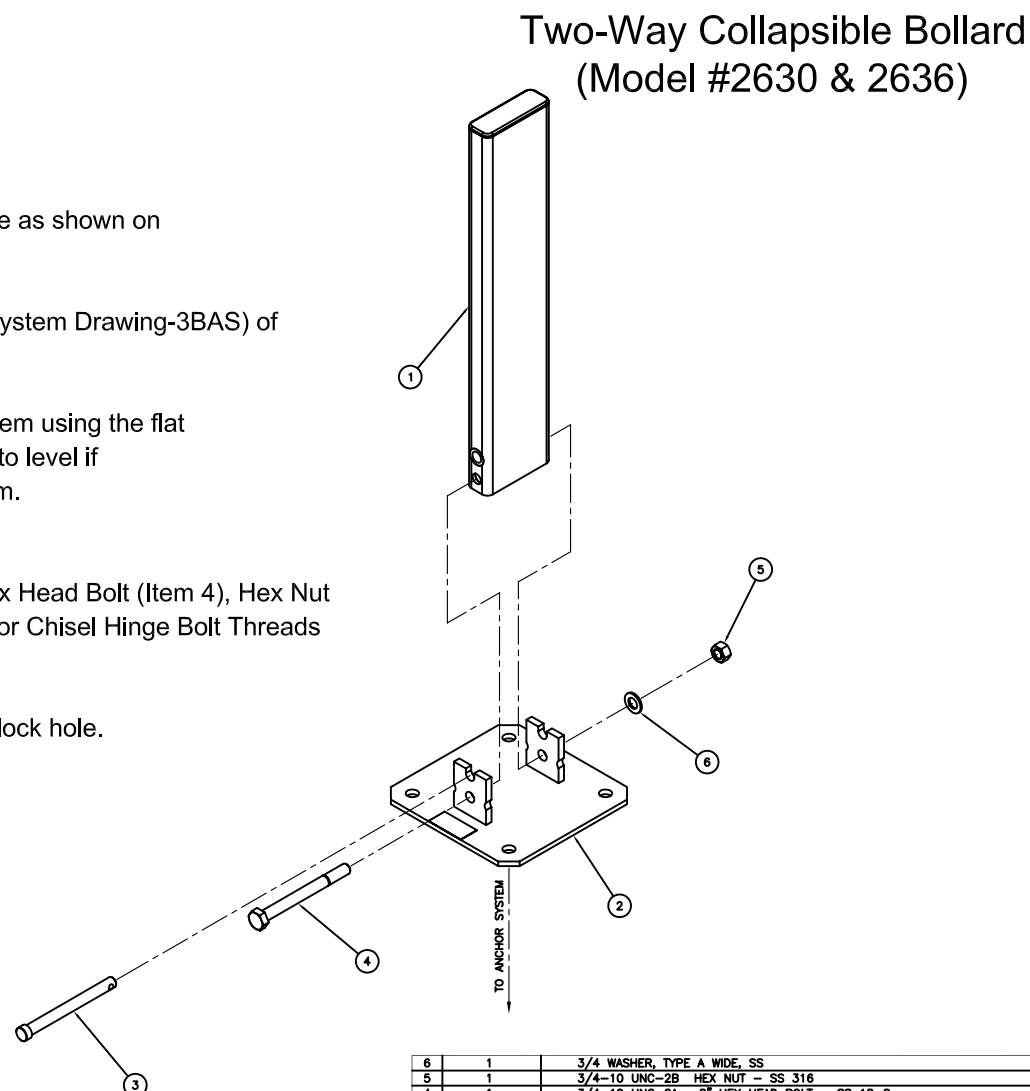
NAME:	USED ON:	TOLERANCES:	ACTION:	BY:	DRAWING NUMBER:
DISPLAY		0.X ± 0.1	DESIGN:		2630/2636
1. DO NOT SCALE FROM DRAWING		0.00X ± 0.06	DRAWING:	CJD	SCALE:
2. UNITS ARE INCHES U.S.A.		ANGULAR ± 1°	CHECKED:	WKZ	DATE: 08-12-05
3. DIMENSIONING BASED ON ASME Y14.5M-1994		FRACTION ± 1/16			SIZE: 34 X 22
					WT: 55 LP
					COPYRIGHT: 2005
					SHT: 1 of 1

Installation Instructions:

HINGED SINGLE POST BOLLARD

1. **Verify that all** Hinged Single Post Bollard parts are in the shipment package as shown on the "Bill of Material".
2. Provide Hinged Single Post Bollard Anchor System (see included Anchor System Drawing-3BAS) of your choice at a location to suit your specific needs.
3. Install Base Weldment (Item 2) true and level on your selected Anchor System using the flat washers and hex nuts included in your Anchor System Kit. Use S.S. shims if needed. Torque hex nuts to Minimum 100 ft-lbs for CPAS10 Anchor System. Torque hex nuts for other Anchor Systems to Manufacturers Specification.
5. Install Bollard Post Weldment (Item 1) to Base Weldment (Item 2) using Hex Head Bolt (Item 4), Hex Nut (Item 5), and Washer (Item 6) as shown. Tack Weld Hex Nut to Hinge Bolt or Chisel Hinge Bolt Threads such that Hex Nut cannot be easily removed.
6. Install Pin (Item 3) thru UP Position Bollard Post, and install Padlock at padlock hole.
7. Install the Label at the location shown.
8. Check the functional operation of the Hinged Bollard Post.

* Note: S.S. shims, tools, grease, and padlock are not provided.



6	1	3/4 WASHER, TYPE A WIDE, SS
5	1	3/4-10 UNC-2B HEX NUT - SS 316
4	1	3/4-10 UNC-2A x 8" HEX HEAD BOLT - SS 18-8
3	1	PIN
2	1	BOLLARD POST WELDMENT
1	1	BASE WELDMENT
ITEM QTY.		DESCRIPTION
BILL OF MATERIAL		
NAME: ASSEMBLY		
USED ON: TOLERANCES: 0.X ± 0.1		
DESIGN: 0.00X ± 0.06		
1. DO NOT SCALE FROM DRAWING		
2. UNITS ARE INCHES U.S.		
3. DIMENSIONING BASED ON ASME Y14.5M-1994		
ACTION: BY: DRAWING NUMBER: 2630/2636		
DRAWING: CJD SCALE: 1:4 DATE: 11-28-05 SIZE: 34 X 22		
CHECKED: WKZ WT: 52 LBS COPYRIGHT: 2005 SHEET: 1 of 1		

TrafficGuard®, Inc.
PO Box 201, Geneva, IL 60134
Phone: 877-727-7347
Fax: 800-814-7194
www.trafficguard.net

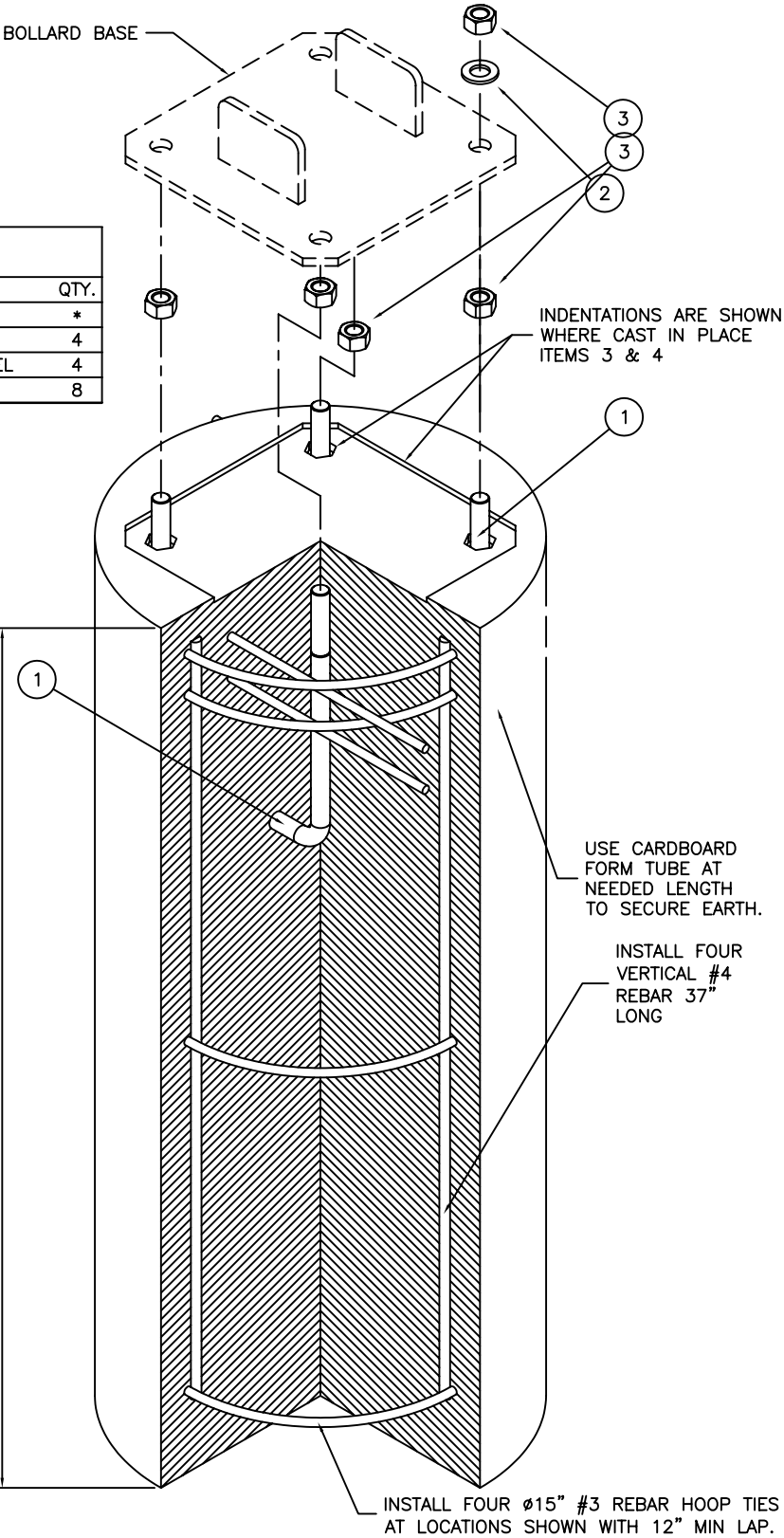
This drawing shall not be used or reproduced except when authorized in writing by TrafficGuard®.

TrafficGuard®, Inc.
PO Box 201, Geneva, IL 60134
Phone: 877-727-7347
Fax: 800-814-7194
www.trafficguard.net

Footing Detail

FOR MODELS:
2630
2636

NOTE: CONCRETE, FORM AND REBAR PROVIDED BY OTHERS



BILL OF MATERIAL

ITEM	DESCRIPTION	QTY.
*	ANCHOR BOLT KIT	*
1	3/4" x 12" TYPE L ANCHOR BOLT-H.D.G.	4
2	3/4" TYPE A FLAT NARROW WASHER GALVANIZED STEEL	4
3	3/4" HEX NUT GALVANIZED STEEL	8

*Anchor Bolt Kit included only
if ordered at an additional cost.

RETE PIER ANCHOR SYSTEM (CPAS)