



GENERAL WARNINGS AND CAUTIONARY STATEMENTS FOR FIXED BOLLARDS

In order to safely and effectively use any TrafficGuard[®], Inc. product, please read and understand the General Warnings and Cautionary Statements contained below. If you have any questions about any of these General Warnings and Cautionary Statements, or about any aspect of TrafficGuard[®], Inc.'s products or literature, please contact TrafficGuard[®], Inc. at 877-727-7347, or email sales@trafficguard.net.



BOLLARD SELECTION AND PLACEMENT

based on vehicle weight, speed and other site specific factors to be determined by owner.



FAILURE TO UTILIZE TRAFFICGUARD[®], INC. AUTHORIZED PARTS, OR MODIFICATIONS

to the TrafficGuard[®], Inc. products, or failure to follow the recommended installation procedures, will result in your warranty being null and void.



READ AND FULLY UNDERSTAND THE INSTALLATION INSTRUCTIONS

before attempting to install any TrafficGuard[®], Inc. bollard product.



SUBSTITUTION OF COMPONENTS MAY IMPAIR THE PROPER FUNCTION

of TrafficGuard[®], Inc. bollards products. If you need replacement parts, please contact TrafficGuard[®], Inc. at the number and email above.



FOR MAXIMUM EFFECTIVENESS

of TrafficGuard[®], Inc. bollard products, be sure to properly maintain bollards by replacing any damaged, corroded or missing components, and reapply paint as required to maximize visibility. Failure to properly maintain product can negatively impact the bollards performance over time.

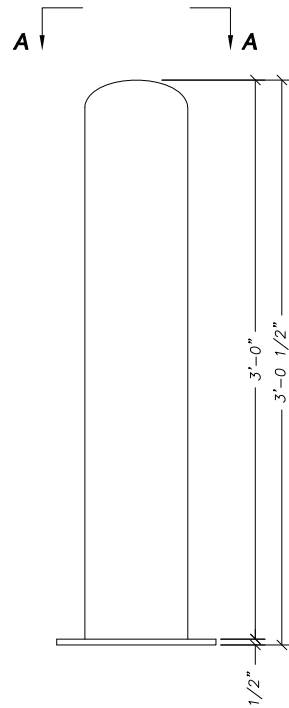


TO ENSURE VISIBILITY

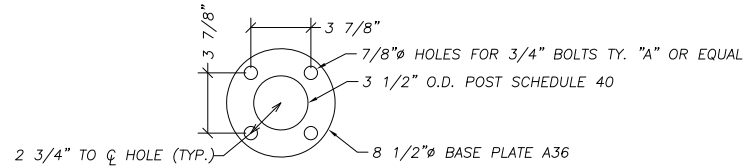
of bollards, be sure to apply all decals that are provided with the product, and in the manner recommended by TrafficGuard[®], Inc.

IF IN DOUBT CALL TRAFFICGUARD[®], INC. 877-727-7347

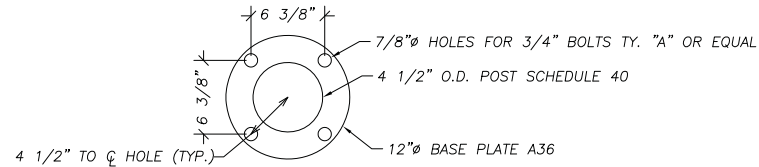
ROUND FIXED POST SURFACE MOUNT SERIES



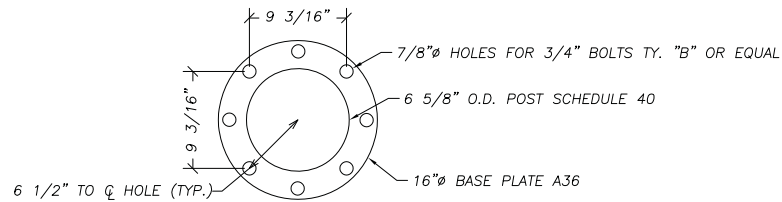
SURFACE MOUNTED BOLLARD POST ELEVATION
SCALE: 1 1/2" = 1'-0"



SEC A-A 3" POST BASE
SCALE: 1 1/2" = 1'-0"



SEC A-A 4" POST BASE
SCALE: 1 1/2" = 1'-0"



SEC A-A 6" POST BASE
SCALE: 1 1/2" = 1'-0"

TYPE "A" BOLT - HILTI HIT RE 500 EPOXY ADHESIVE ANCHOR, 3/4" DIA., EMBEDMENT 9"

TYPE "B" BOLT - HILTI HVA CAPSULE ADHESIVE ANCHOR, HAS ROD 3/4" DIA., EMBEDMENT 10"

ANCHOR BOLTS, ADHESIVE AND INSTALLATION SHALL IN ACCORDANCE WITH MANUFACTURERS RECOMMENDATIONS

TrafficGuard,® Inc.
"Authorities on Limiting Access"
P.O. Box 201, Geneva, IL. 60134
877-727-7347
www.trafficguard.net

ATTACH REFLECTIVE WARNING LABELS PROVIDED TO THE FRONT & BACK OF BOLLARD AFTER INSTALLATION.

TrafficGuard,® Inc.
www.trafficguard.net
P.O. Box 201, Geneva, IL. 60134
Bus: 877-727-7347 Fax: 800-814-7194

NAME	USED ON	TOLERANCES	ACTION	BY	DRAWING NUMBER
DISPLAY		0.X = ± 0.1	DESIGN	WKZ	RFP Ser10's
1. DO NOT SCALE FROM DRAWING		0.XXX = ± 0.06	DRAWING	CJD	SCALE: 1:4
2. UNITS ARE IN INCHES UN.		ANGULAR=± 1°	CHECKED	WKZ	DATE: 10-23-06
3. DIMENSIONING BASED IN ASME Y14.5M-1994		FRACTION=1/16			SIZE: 34 X 22
					WT: 135 LBS
					COPYRIGHT: 2006
					SHT: 1 of 1


CONSTRUCTION DATA SCHEDULE RPAS

1. THE DESIGN LOAD IS A STATIC LOAD "P" APPLIED AT 27 INCHES ABOVE GRADE.
2. THE EARTH PRESSURE VALUE IS SHOWN AT DESIGN LOAD AND THE OWNER SHOULD VERIFY THAT THE EARTH IS ADEQUATE TO WITHSTAND THE NOTED EARTH DESIGN PRESSURE.
3. ANCHORAGE SYSTEMS BY OTHERS THAN TRAFFICGUARD,[®] INC. MAY CAUSE PREMATURE FAILURE OF THE BOLLARD.

NOTE: CONCRETE, FORM, ROCK, PVC DRAIN AND REBAR PROVIDED BY OTHERS										
DESIGN LOAD P	BOLLARD		EARTH "Q" MAX.	PIER HT. "C" MIN.	VERT. REBAR		HOOP TIES	PIER CONCRETE	FRENCH DRAIN	PIER "D"
	Out Dia.	Ins Dia.			LENGTH	QTY				
600 #	1.910"	1.620"	992 PSF	42 INCH	38 INCH	3	6 EA.	6 Cu Ft	1.2 CF	8"
1200 #	2.440"	2.064"	1984 PSF	42 INCH	38 INCH	3	6 EA.	6 Cu Ft	1.2 CF	8"
3000 #	3.500"	3.068"	2204 PSF	42 INCH	38 INCH	4	6 EA.	6 Cu Ft	0.5 CF	18"
6000 #	4.500"	4.026"	4408 PSF	42 INCH	38 INCH	4	6 EA.	6 Cu Ft	0.5 CF	18"
6000 #	4.500"	4.026"	2667 PSF	54 INCH	50 INCH	4	7 EA.	8 Cu Ft	0.5 CF	18"
10000#	5.563"	5.047"	4444 PSF	54 INCH	50 INCH	4	7 EA.	8 Cu Ft	0.5 CF	18"
10000#	5.563"	5.047"	3600 PSF	60 INCH	56 INCH	4	8 EA.	9 Cu Ft	0.5 CF	18"
10000#	5.563"	5.047"	2975 PSF	66 INCH	62 INCH	4	8 EA.	10 Cu Ft	0.5 CF	18"
15000#	6.625"	6.065"	3750 PSF	72 INCH	68 INCH	4	9 EA.	11 Cu Ft	0.5 CF	18"
15000#	6.625"	6.065"	3195 PSF	78 INCH	72 INCH	4	9 EA.	12 Cu Ft	0.5 CF	18"
15000#	6.625"	6.065"	3240 PSF	60 INCH	56 INCH	8	8 EA.	25 Cu Ft	1.6 CF	30"
15000#	6.625"	6.065"	3333 PSF	54 INCH	50 INCH	8	7 EA.	32 Cu Ft	1.8 CF	36"

THIS IS A GUIDELINE FOR ESTIMATING, SITE SPECIFIC CONDITIONS SHOULD BE VERIFIED.
 This Drawing shall not be used nor reproduced except when authorized in writing by TrafficGuard,[®] Inc.

ROUND POST BOLLARD RPAS ANCHORAGE SYSTEM DETAILS

THIRD ANGLE PROJECTION 
 Do not scale from drawing

Toll Free **TrafficGuard,[®] Inc.**
 P.O. Box 201, Geneva, IL. 60134
 Bus: 1.877.727.7347 Fax: 1.800.814.7194

Rev.	Date	by	Description	Action	by	Dwg. Scale:	nts	Assembly Shipping Weight	Drawing Number:
3	-	-	-	Design	wkz	Dwg. Scale:	nts	Varies per Model	RPAS-2
2	-	-	-	Drawn	wkz	Copywrite:	2010	Drawing Date:	12.10.10
1	-	-	-	Checked	wkz	Dwg. Size:	Letter	Sheet:	2 of 2