



GENERAL WARNINGS AND CAUTIONARY STATEMENTS FOR COLLAPSIBLE BOLLARDS

In order to safely and effectively use any TrafficGuard[®], Inc. product, please read and understand the General Warnings and Cautionary Statements contained below. If you have any questions about any of these General Warnings and Cautionary Statements, or about any aspect of TrafficGuard[®], Inc.'s products or literature, please contact TrafficGuard[®], Inc. at 877-727-7347, or email sales@trafficguard.net.



BOLLARD SELECTION AND PLACEMENT

based on vehicle weight, speed and other site specific factors to be determined by owner.



FAILURE TO UTILIZE TRAFFICGUARD[®], INC. AUTHORIZED PARTS, OR MODIFICATIONS

to the TrafficGuard[®], Inc. products, or failure to follow the recommended installation procedures, will result in your warranty being null and void.



READ AND FULLY UNDERSTAND THE INSTALLATION INSTRUCTIONS

before attempting to install any TrafficGuard[®], Inc. bollard product.



SUBSTITUTION OF COMPONENTS MAY IMPAIR THE PROPER FUNCTION

of TrafficGuard[®], Inc. bollards products. If you need replacement parts, please contact TrafficGuard[®], Inc. at the number and email above.



ALWAYS ENSURE THAT THE LOCK PIN IS LOCKED INTO PLACE

in the upright position with all collapsible bollards.



WARNING: FAILURE TO RETURN COLLAPSIBLE BOLLARD TO UPRIGHT, LOCKED POSITION IMMEDIATELY AFTER USE POSES A SIGNIFICANT HAZARD.



REPLACEMENT LOCK PINS ARE AVAILABLE

for purchase at TrafficGuard[®], Inc. For purchase of replacement lock pins or other components, please contact TrafficGuard[®], Inc. at the number or email above.



CAUTION: LOCK PIN MUST ALWAYS BE SECURED WITH PADLOCK WHEN BOLLARD IS IN UPRIGHT POSITION.



FOR MAXIMUM EFFECTIVENESS

of TrafficGuard[®], Inc. bollard products, be sure to properly maintain bollards by replacing any damaged, corroded or missing components, and reapply paint as required to maximize visibility. Failure to properly maintain product can negatively impact the bollards performance over time.



TO ENSURE VISIBILITY

of bollards, be sure to apply all decals that are provided with the product, and in the manner recommended by TrafficGuard[®], Inc.

IF IN DOUBT CALL TRAFFICGUARD[®], INC. 877-727-7347

TrafficGuard,® Inc.

HINGED ROUND POST BOLLARD (HRP)

"The Original Multifunction Bollard"
Standard Features Include :

Ease of use in 5 easy steps:

1. Remove padlock
2. Remove locking pin
3. Lower bollard post
4. Replace locking pin
5. Allows vehicle access

Safety:

30" overall height and "Safety Yellow" finish are standard for high visibility. Custom colors available upon request.

Heavy Duty:

Closed Steel Pipe Construction
Stainless Steel Locking Pin

Proven Performance:

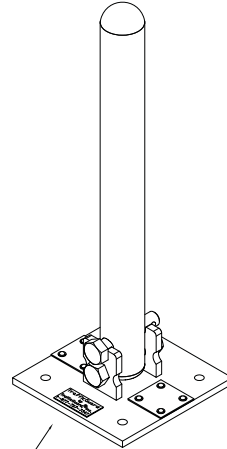
References Available Upon Request

Low Maintenance

Warranty

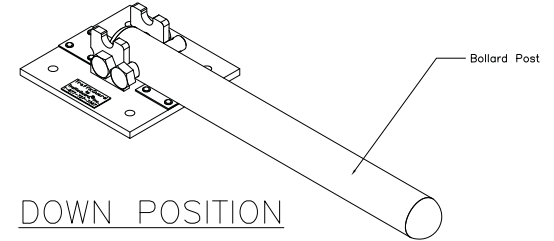
\$1,000,000 Liability Coverage

Orders for "Safety Yellow" shipped in 48 hours.

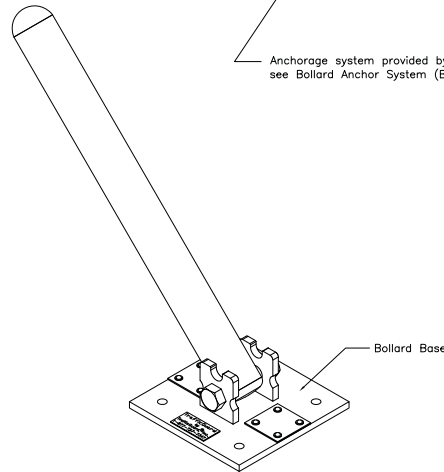


UP POSITION

Anchorage system provided by customer
see Bollard Anchor System (BAS) drawing



DOWN POSITION



45 DEGREE POSITION

PRODUCT HIGHLIGHTS

Traditional Round Post Bollard appearance

Features single locking pin
for easy access

Clearance Height 4" in
lowered position

Single Post design with
2-1/2" steel pipe

HINGED ROUND POST BOLLARD		THIRD ANGLE PROJECTION	TrafficGuard,® Inc.	
ISOMETRIC DISPLAY DRAWING		Do not scale from drawing	P.O. Box 201, Geneva, IL 60134 Bus: 877-727-7347 Fax: 800-814-7194	
CONSULTING ENGINEER: ZC 305 # 04-119	Design: WKZ	Action by:	SIZE: D	Weight: 35.50 Pounds
ZABEL ENGINEERING CONSULTING ENGINEERS 203 South Rosedale Av., Aurora, IL 60506 Bus: 630-892-0688 Fax: 630-892-1087	Drawn: CJD	Checked: WKZ	Scale: 1 = 4	Drawing Date: 8-4-2002
1 WKZ 9-13-04 HRP & TRAFFIC GUARD	Rev. by	Date	Description	Drawing Number: HRP A1
				Sheet: 1 of 2

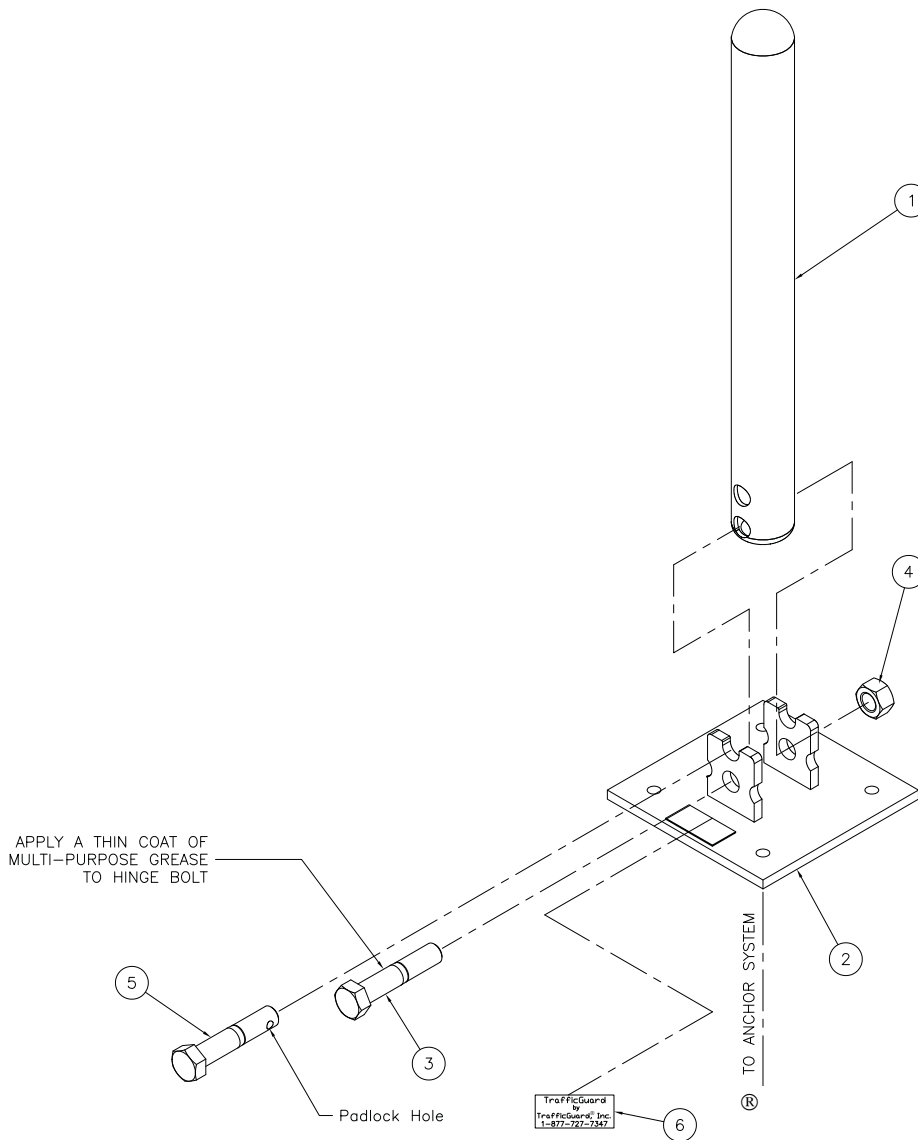
INSTALLATION INSTRUCTIONS FOR:

HINGED ROUND POST BOLLARD

1. Verify that all Hinged Round Post Bollard parts are in the shipment package as shown on the "Bill of Material".
 2. Provide Hinged Round Bollard Anchor System (see included Anchor System Drawing-3BAS) of your choice at a location to suit your specific needs.
 3. Install HRP Base (Item 2) true and level on your selected Anchor System using the flat washers and hex nuts included in your Anchor System Kit. Use S.S. shims to level if needed. Torque hex nuts to Minimum 30 ft-lbs for CPAS10 Anchor System. Torque hex nuts for other Anchor Systems to Manufacturers Specification.
 5. Install HRP Post (Item 1) to HRP Base (Item 2) using Hinge Bolt (Item 3) and Hex Nut (Item 4) as shown. Tack Weld Hex Nut to Hinge Bolt or Chisel Hinge Bolt Threads such that Hex Nut cannot be easily removed.
 6. Install HRP Locking Pin (Item 5) thru UP Position Bollard Post, and install Padlock at padlock hole.
 7. Install the Label at the location shown.
 8. Check the functional operation of the Hinged Bollard Post.
- * Note: S.S. shims, tools, grease, and padlock are not provided.

BILL OF MATERIAL

ITEM	PART #	DESCRIPTION	QTY.
1	HRPF1	HRPF1	1
2	HRPF2	HRP BASE - WELDMENT	1
3	0019	1-8 UNC-2Ax5" HINGE BOLT SS 18-8	1
4	0020	1-8 UNC-2B HEX NUT - SS 316	1
5	4004	HRP LOCKING PIN	1
6	0105	LABEL	1



General Specifications and Notes for all Parts and Weldments

1. All Steel Work shall conform to the AISC "Specification for the Design, Fabrication and Erection of Structural Steel for Buildings" - Latest Edition unless noted on the drawing.
2. All Welding shall be performed by qualified welders and shall conform to the American Welding Society AWS D1.1 - Latest Edition of the Structural Welding Code
3. All Material shall be new and shall be as noted on the drawing and/or in the Bill of Material. SS indicates Stainless Steel and HDG indicates Hot Dip Galvanized.
4. All Painting Work shall conform to the manufacturer's specification and installation instructions and the SSPC (Steel Structures Painting Council) and as noted on the drawing.
5. All hole center dimensions shall have a tolerance of 1/16 inch± and other dimensions shall have a tolerance of 1/8 inch± unless noted on the drawing.
6. All work shall be packaged and shipped per specific instructions by Traffic Guard Direct.

HINGED ROUND POST BOLLARD

ASSEMBLY DRAWING

THIRD ANGLE PROJECTION
Do not scale from drawing

TrafficGuard®, Inc.

P.O. Box 201, Geneva, IL 60134
Bus: 877-727-7347 Fax: 800-814-7194

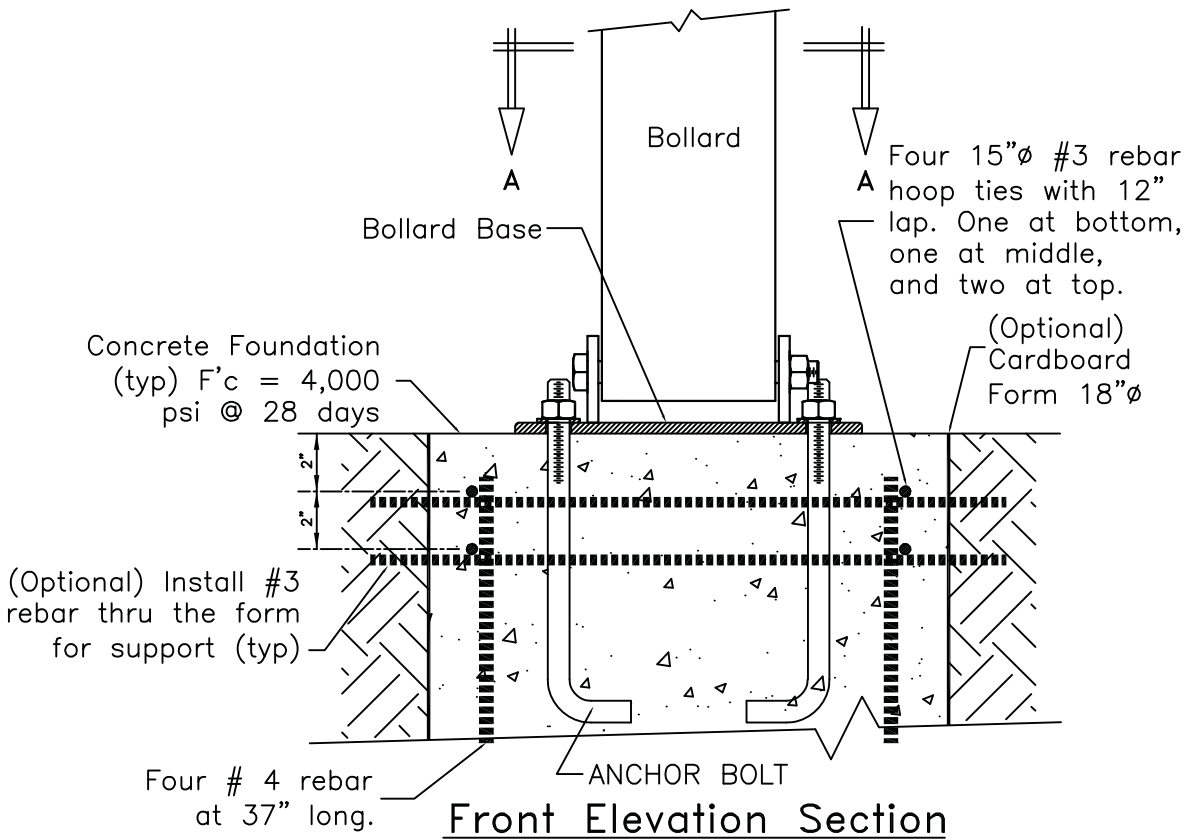
CONSULTING ENGINEER: ZE Job # 04-119
ZABEL ENGINEERING
CONSULTING ENGINEERS
203 South Rosedale Av., Aurora, IL 60506
Bus: 630-892-0698 Fax: 630-892-1087

Rev.	by	Date	Description	Checked	WKZ
1	WKZ	9-13-04	TORQUE		

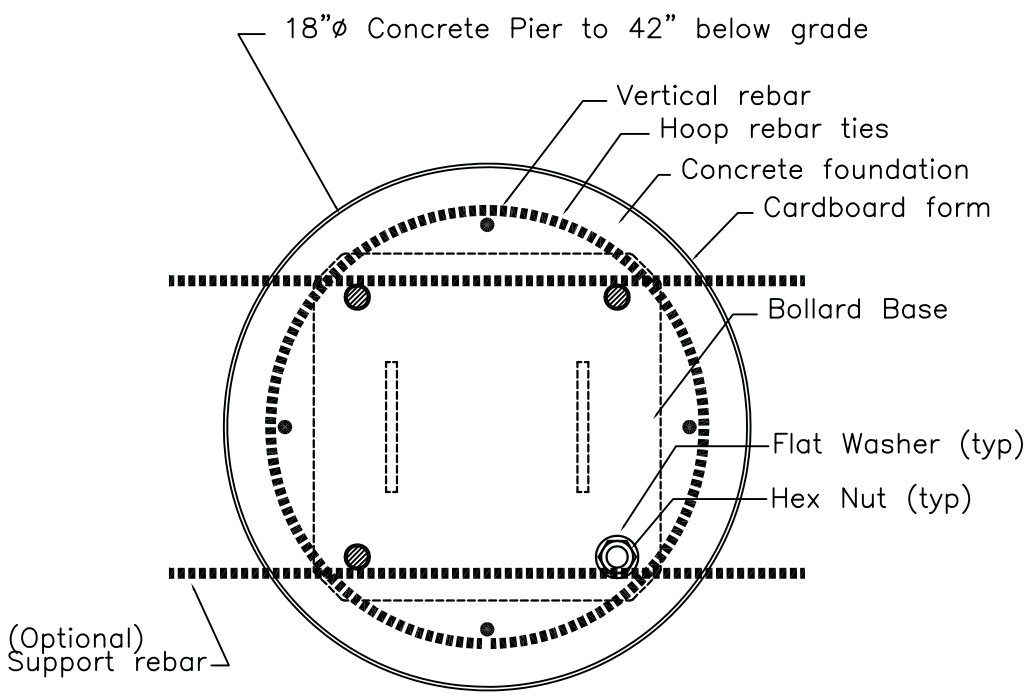
Action	by	SIZE	Weldment Shipping Weight	Drawing Number:
Design	WKZ	D	35.50 Pounds	HRPA2-1
Drawn	CJD			

Scale: 1 = 4 Drawing Date: 8-4-2002 Sheet: 2 of 2

This Drawing shall not be used nor reproduced except when authorized in writing by TrafficGuard,® Inc.



Front Elevation Section



Plan Section "A-A"

CPAS10 COLLAPSIBLE POST ANCHOR SYSTEM DETAILS

These Anchorage systems are designed for the noted loading based on a quality substrate material and proper installation, by the customer's contractor. The installation shall conform to the drawing and the manufacturer's instructions. The customer is responsible to determine the adequate quality of new or existing concrete and the earth substrate. The concrete shall be solid and uncracked with adequate thickness for the anchors and a compressive strength of F_c' (minimum)=4,000 pounds per square inch. The earth shall have an unconfined strength of Q_u (minimum)=4,000 pounds per square foot. If you have questionable substrates, contact your local structural engineer for appropriate anchorage evaluation and/or anchorage design. A test installation may be required to determine the adequacy of the anchorage system for your specific installation. Call for guidance, if needed.

**CONCRETE PIER ANCHOR SYSTEM
DETAIL DRAWING CPAS10**

THIRD ANGLE PROJECTION
Do not scale from drawing

Toll Free
Bus: 1.877.727.7347 Fax: 1.800.814.7194
TrafficGuard,® Inc.
P.O. Box 201, Geneva, IL. 60134

Rev.	Date	by	Description	Action	by	Dwg. Scale:	Assembly Shipping Weight	Drawing Number:
2	11.14.10	wkz	Locking Pins & Note	Design	wkz	nts	84 Pounds	CPAS10
1	-	-	-	Drawn	wkz	Copywrite: 2010		
				Checked	wkz	Dwg. Size: Letter	Drawing Date: 12.10.10	Sheet: 2 of 2