



GENERAL WARNINGS AND CAUTIONARY STATEMENTS FOR COLLAPSIBLE BOLLARDS

In order to safely and effectively use any TrafficGuard[®], Inc. product, please read and understand the General Warnings and Cautionary Statements contained below. If you have any questions about any of these General Warnings and Cautionary Statements, or about any aspect of TrafficGuard[®], Inc.'s products or literature, please contact TrafficGuard[®], Inc. at 877-727-7347, or email sales@trafficguard.net.



BOLLARD SELECTION AND PLACEMENT

based on vehicle weight, speed and other site specific factors to be determined by owner.



FAILURE TO UTILIZE TRAFFICGUARD[®], INC. AUTHORIZED PARTS, OR MODIFICATIONS

to the TrafficGuard[®], Inc. products, or failure to follow the recommended installation procedures, will result in your warranty being null and void.



READ AND FULLY UNDERSTAND THE INSTALLATION INSTRUCTIONS

before attempting to install any TrafficGuard[®], Inc. bollard product.



SUBSTITUTION OF COMPONENTS MAY IMPAIR THE PROPER FUNCTION

of TrafficGuard[®], Inc. bollards products. If you need replacement parts, please contact TrafficGuard[®], Inc. at the number and email above.



ALWAYS ENSURE THAT THE LOCK PIN IS LOCKED INTO PLACE

in the upright position with all collapsible bollards.



WARNING: FAILURE TO RETURN COLLAPSIBLE BOLLARD TO UPRIGHT, LOCKED POSITION IMMEDIATELY AFTER USE POSES A SIGNIFICANT HAZARD.



REPLACEMENT LOCK PINS ARE AVAILABLE

for purchase at TrafficGuard[®], Inc. For purchase of replacement lock pins or other components, please contact TrafficGuard[®], Inc. at the number or email above.



CAUTION: LOCK PIN MUST ALWAYS BE SECURED WITH PADLOCK WHEN BOLLARD IS IN UPRIGHT POSITION.



FOR MAXIMUM EFFECTIVENESS

of TrafficGuard[®], Inc. bollard products, be sure to properly maintain bollards by replacing any damaged, corroded or missing components, and reapply paint as required to maximize visibility. Failure to properly maintain product can negatively impact the bollards performance over time.



TO ENSURE VISIBILITY

of bollards, be sure to apply all decals that are provided with the product, and in the manner recommended by TrafficGuard[®], Inc.

IF IN DOUBT CALL TRAFFICGUARD[®], INC. 877-727-7347

INSTALLATION INSTRUCTIONS FOR:

SCREWLOCK DOUBLE POST HINGED BOLLARD (DHB-SL)

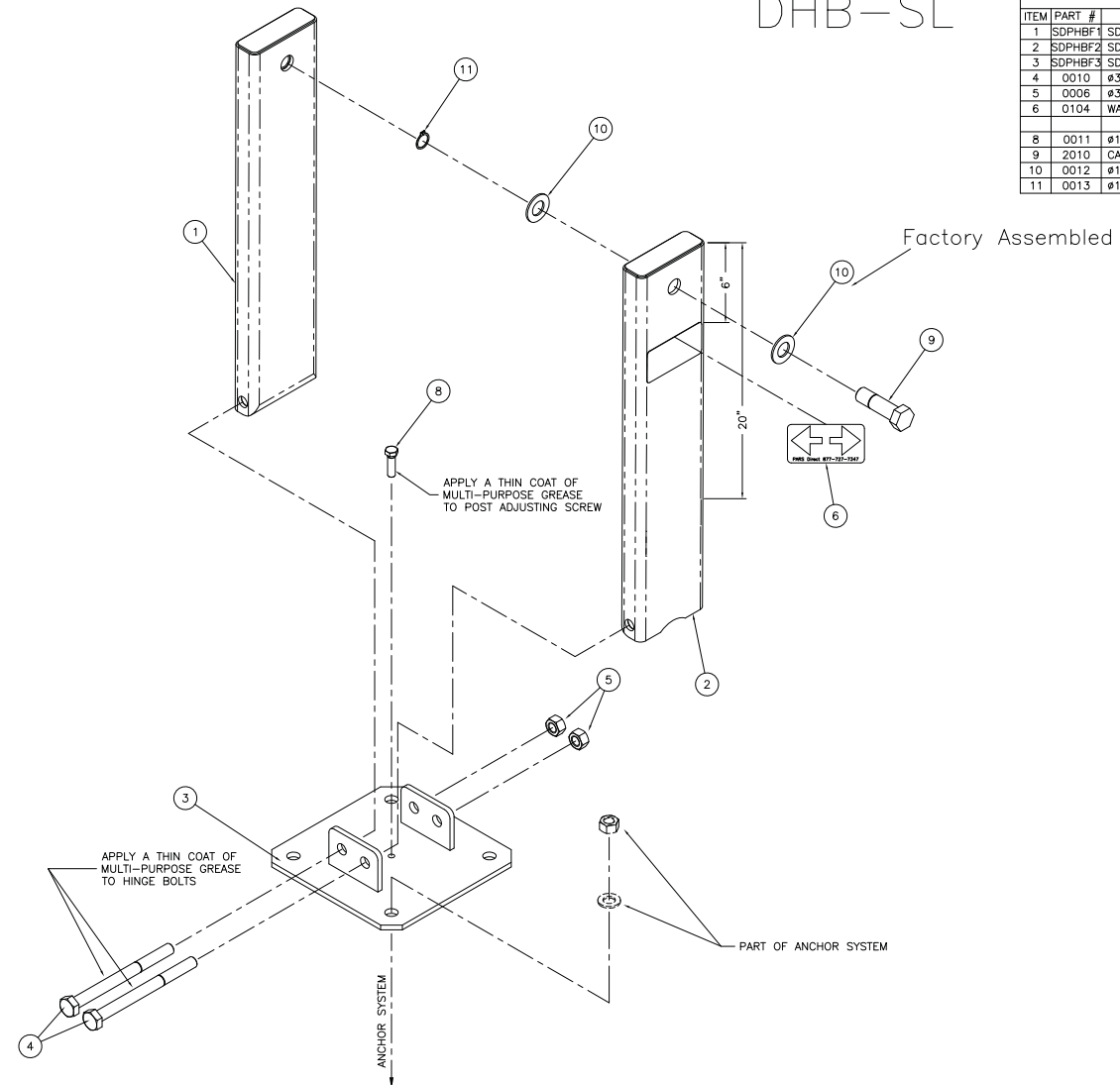
1. Verify that all Screwlock Double Post Hinged Bollard parts are in the shipment package as shown on the "Bill of Material".
 2. Provide Screwlock Double Post Hinged Bollard Anchor System (see included Anchor System Drawing-BAS) of your choice at a location to suit your specific needs.
 3. Install SDPHB Base (Item 3) true and level on your selected Anchor System using the flat washers and hex nuts included in your Anchor System Kit. Use S.S. shims to level if needed. Torque hex nuts to Minimum 100 ft-lbs for Anchor Systems CPAS and ESAS. Torque hex nuts for other Anchor Systems to Manufacturers Specification.
 4. Install SDPHB Screw Post and SDPHB Nut Post (Item 1&2) to SDPHB Base (Item 3) using Hinge Bolts (Item 4) and Hex Nuts (Item 5) as shown. Tack Weld Hex Nuts to Hinge Bolts or Chisel Hinge Bolt Threads such that Hex Nuts cannot be easily removed.
 5. Install Captive Lock Screw (Item 9) thru UP Position SDPHB Screw Post (Item 2), with Washers (Item 10) and Retaining Ring (Item 11) positioned as shown.
 6. With Bollard Posts (Items 1&2) in the UP Position, Use a Standard Fire Hydrant Wrench or 1-1/2" Hex Head Wrench to tighten snug Captive Lock Screw (Item 9) into SDPHB Nut Post (Item 1).
 6. Install the four Labels at the locations shown.
 7. Install Post Adjusting Screw (Item 8) in threaded hole in center of DPHB Base (Item 2). Adjust Screw to keep DPHB Posts (Item 1) from rocking while in upright Padlocked position.
 8. Check the functional operation of the Hinged Bollard Posts.
- * Note: S.S. shims, tools, grease, and padlocks are not provided.

SCREWLOCK DOUBLE POST HINGED BOLLARD		THIRD ANGLE PROJECTION	TrafficGuard, Inc. P.O. Box 201, Geneva, IL 60134 Bus: 877-727-7347 Fax: 800-814-7194	
ASSEMBLY DRAWING		Do not scale from drawing		
CONSULTING ENGINEER: ZE JOB # 02-102		Design	WKC	Action by
ZABEL ENGINEERING CONSULTING ENGINEERS		Drawn	CJD	SIZE
203 South Rowedale Av., Aurora, IL 60506 Bus: 630-892-0688 Fax: 630-892-1087		Rev.	by	Date
		Description	Checked	WKC
			Scale:	3"=1'
			Drawing Date:	4-1-2003
			Sheet:	2 of 2
			Assembly Shipping Weight	84 Pounds
			Drawing Number:	SDPHBA2

DHB-SL

BILL OF MATERIAL

ITEM	PART #	DESCRIPTION	QTY.
1	SDPHBF1	SDPHB NUT POST	1
2	SDPHBF2	SDPHB POST	1
3	SDPHBF3	SDPHB BASE	1
4	0010	ø3/4" x 8" HEX HEAD HINGE BOLT - 18-8 SS	2
5	0006	ø3/4" HEX NUT - 18-8 SS	2
6	0104	WARNING ARROWS LABEL	2
8	0011	ø1/2" x 1 1/2" HEX HEAD CAP SCREW - 18-8 SS	1
9	2010	CAPTIVE LOCK SCREW - SS	1
10	0012	ø1" FLAT WASHER - SS 18-8	2
11	0013	ø1" EXTERNAL RETAINING RING - TYPE PH15-7 MO SS	1



General Specifications and Notes for all Parts and Weldments

- All Steel Work shall conform to the AISC "Specification for the Design, Fabrication and Erection of Structural Steel for Buildings" - Latest Edition unless noted on the drawing.
- All Welding shall be performed by qualified welders and shall conform to the American Welding Society ANSI/AWS D1.1- Latest Edition of the Structural Welding Code - Steel
- All Material shall be new and shall be as noted on the drawing and/or in the Bill of Material. SS indicates Stainless Steel and HDG indicates Hot Dip Galvanized.
- All Painting Work shall conform to the manufacturer's specification and installation instructions and the SSPC (Steel Structures Painting Council) and as noted on the drawing.
- All hole center dimensions shall have a tolerance of 1/16 inch± and other dimensions shall have a tolerance of 1/8 inch± unless noted on the drawing.
- All work shall be packaged and shipped per specific instructions by PARS Direct.

SCREWLOCK DOUBLE POST HINGED BOLLARD

ASSEMBLY DRAWING

CONSULTING ENGINEER: ZE JOB # 02-102
ZABEL ENGINEERING
 CONSULTING ENGINEERS
 203 South Rosedale Av., Aurora, IL 60506
 Bus: 630-692-0698 Fax: 630-692-1087

THIRD ANGLE PROJECTION
 Do not scale from drawing

TrafficGuard, Inc.
 P.O. Box 201, Geneva, IL 60134
 Bus: 877-727-7347 Fax: 800-814-7194

Rev.	by	Date	Description	Checked	Scale	3"=1"	Drawing Date	4-1-2003	Sheet	2 of 2

Design: WKZ
 Drawn: CJD
 Assembly Shipping Weight: 84 Pounds
 Drawing Number: SDPHBA2

LEVELING BOLT INSTRUCTIONS:

1. START 1/2" (13) X 1 3/4" 18-8 STAINLESS STEEL HEX IN CENTER HOLE OF BASE PLATE.
(THREADS HAVE BEEN LEFT PAINTED FOR A TIGHT FIT)
2. TURN BOLT SLIGHTLY THROUGH BASE.
3. INSTALL POSTS AND LOCKING UPRIGHT POSITION.
4. BEGIN RAISING LEVELING BOLT WITH WRENCH UNTIL CONTACT IS MADE WITH POSTS.
RESULTS WILL BE A STABLE SET OF POSTS.

TrafficGuard,[®] Inc.

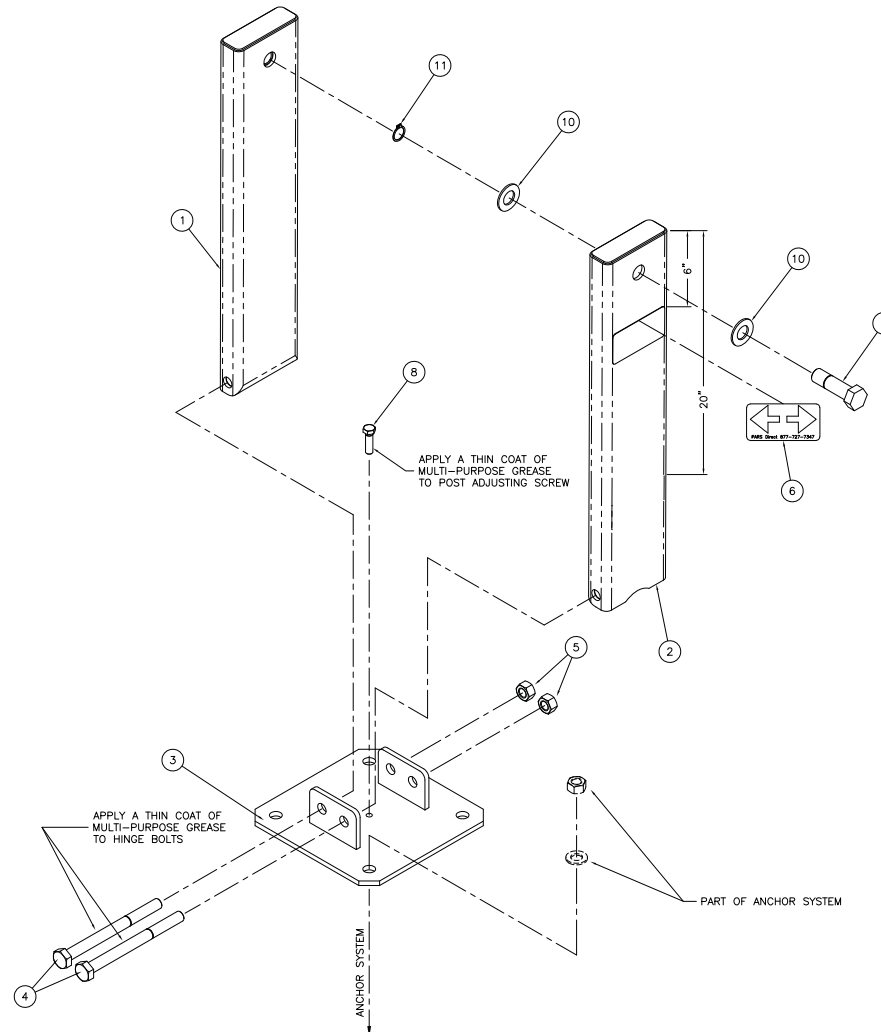
"Authorities on Limiting Access"

P.O. Box 201, Geneva, IL. 60134

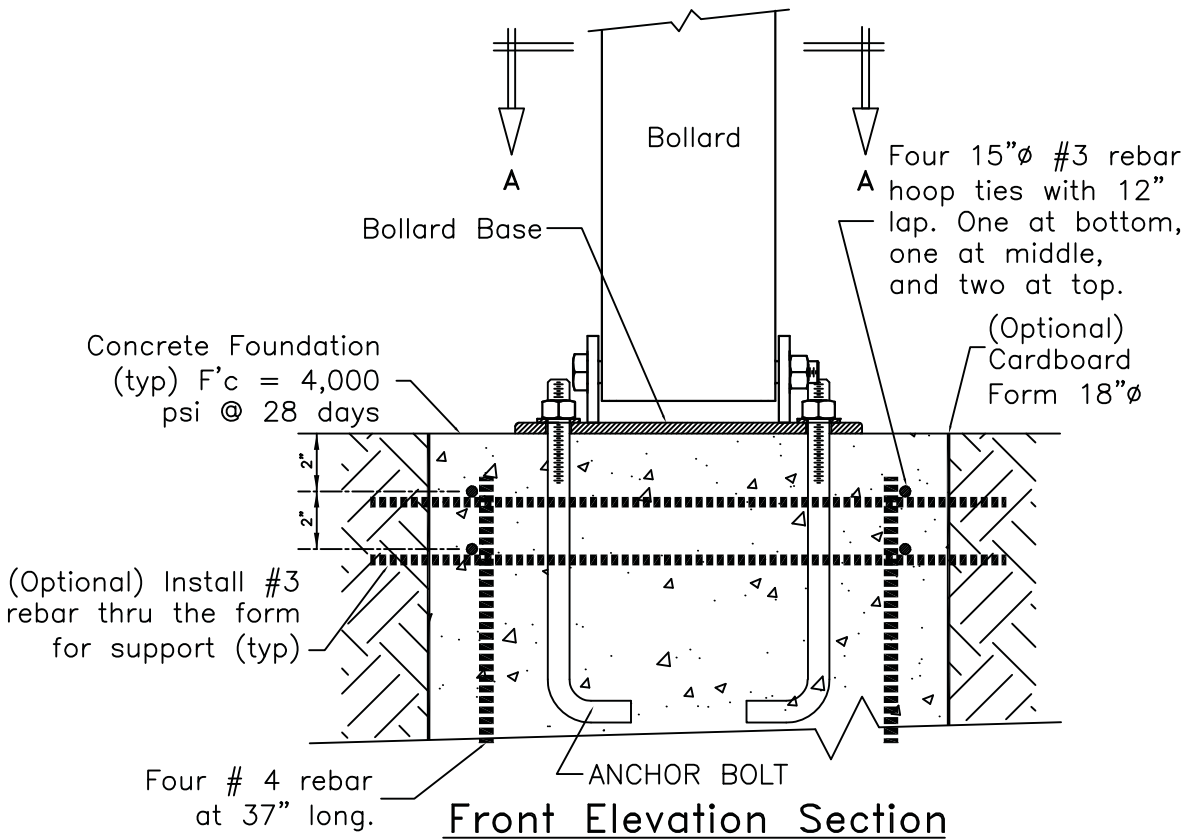
877-727-7347

www.trafficguard.net

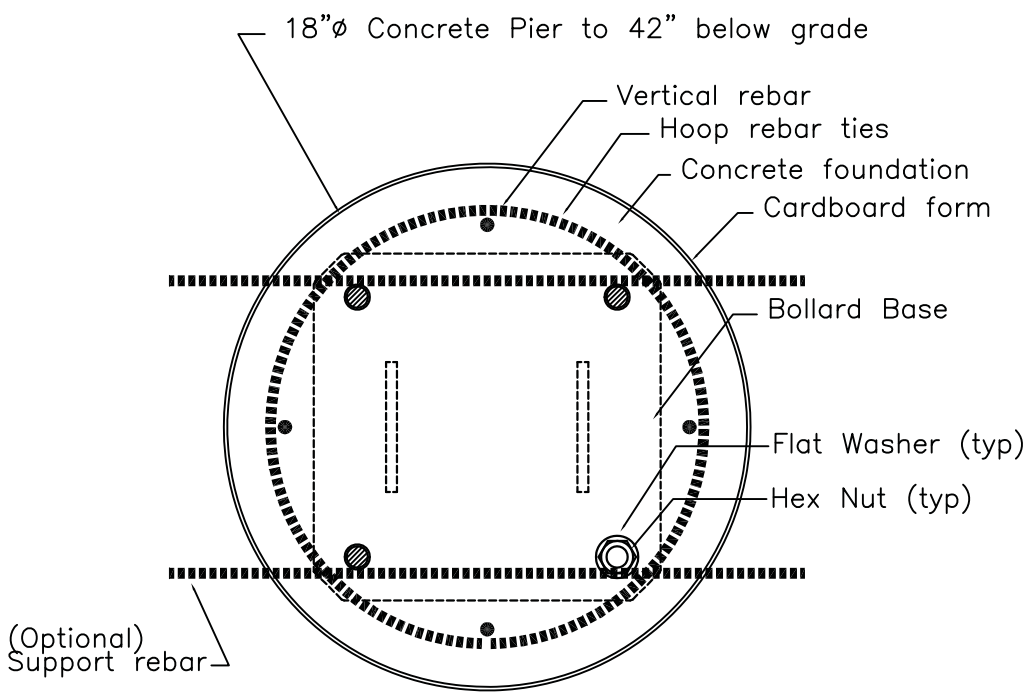
DHB-SL



This Drawing shall not be used nor reproduced except when authorized in writing by TrafficGuard,® Inc.



Front Elevation Section



Plan Section "A-A"

CPAS12 COLLAPSIBLE POST ANCHOR SYSTEM DETAILS

These Anchorage systems are designed for the noted loading based on a quality substrate material and proper installation, by the customer's contractor. The installation shall conform to the drawing and the manufacturer's instructions. The customer is responsible to determine the adequate quality of new or existing concrete and the earth substrate. The concrete shall be solid and uncracked with adequate thickness for the anchors and a compressive strength of F_c' (minimum)=4,000 pounds per square inch. The earth shall have an unconfined strength of Q_u (minimum)=4,000 pounds per square foot. If you have questionable substrates, contact your local structural engineer for appropriate anchorage evaluation and/or anchorage design. A test installation may be required to determine the adequacy of the anchorage system for your specific installation. Call for guidance, if needed.

CONCRETE PIER ANCHOR SYSTEM			THIRD ANGLE PROJECTION	Toll Free		TrafficGuard,® Inc.	
DETAIL DRAWING CPAS12			Do not scale from drawing	P.O. Box 201, Geneva, IL. 60134		Bus: 1.877.727.7347 Fax: 1.800.814.7194	
Rev.	Date	by	Description	Action	by	Dwg. Scale:	Assembly Shipping Weight
2	11.14.10	wkz	Locking Pins & Note	Design	wkz	nts	84 Pounds
1	-	-	-	Drawn	wkz	Copywrite: 2010	Drawing Number:
				Checked	wkz	Dwg. Size: Letter	CPAS12
						Drawing Date: 12.10.10	Sheet: 2 of 2