



GENERAL WARNINGS AND CAUTIONARY STATEMENTS FOR COLLAPSIBLE BOLLARDS

In order to safely and effectively use any TrafficGuard Direct product, please read and understand the General Warnings and Cautionary Statements contained below. If you have any questions about any of these General Warnings and Cautionary Statements, or about any aspect of TrafficGuard Direct's products or literature, please contact TrafficGuard Direct at 877-727-7347, or email sales@trafficguard.net.



READ AND FULLY UNDERSTAND THE INSTALLATION INSTRUCTIONS

before attempting to install any TrafficGuard Direct bollard product.



SUBSTITUTION OF COMPONENTS MAY IMPAIR THE PROPER FUNCTION of TrafficGuard

Direct bollard products. If you need replacement parts, please contact TrafficGuard Direct at the number and email above.



ALWAYS ENSURE THAT THE LOCK PIN IS LOCKED INTO PLACE whether the bollard is in the upright or down position with collapsible bollards.



WARNING: FAILURE TO LOCK THE LOCK PIN IN PLACE ON COLLAPSIBLE BOLLARDS MAY CAUSE THE BOLLARD TO FALL – ALWAYS LOCK THE LOCK PIN IN PLACE WITH A PADLOCK.



REPLACEMENT LOCK PINS ARE AVAILABLE for purchase at TrafficGuard Direct. For purchase of replacement lock pins or other components, please contact TrafficGuard Direct at the number or email above.



CAUTION: LOCK PIN MUST ALWAYS BE SECURED WITH PADLOCK WHEN BOLLARD IS UPRIGHT OR IN DOWN POSITION.



FOR MAXIMUM EFFECTIVENESS of TrafficGuard Direct bollard products, be sure to properly maintain bollards by replacing any damaged, corroded or missing components, and reapply paint as required to maximize visibility.




TO ENSURE VISIBILITY of bollards, be sure to apply all decals that are provided with the product, and in the manner recommended by TrafficGuard Direct.

IF IN DOUBT CALL TRAFFICGUARD DIRECT 877-727-7347

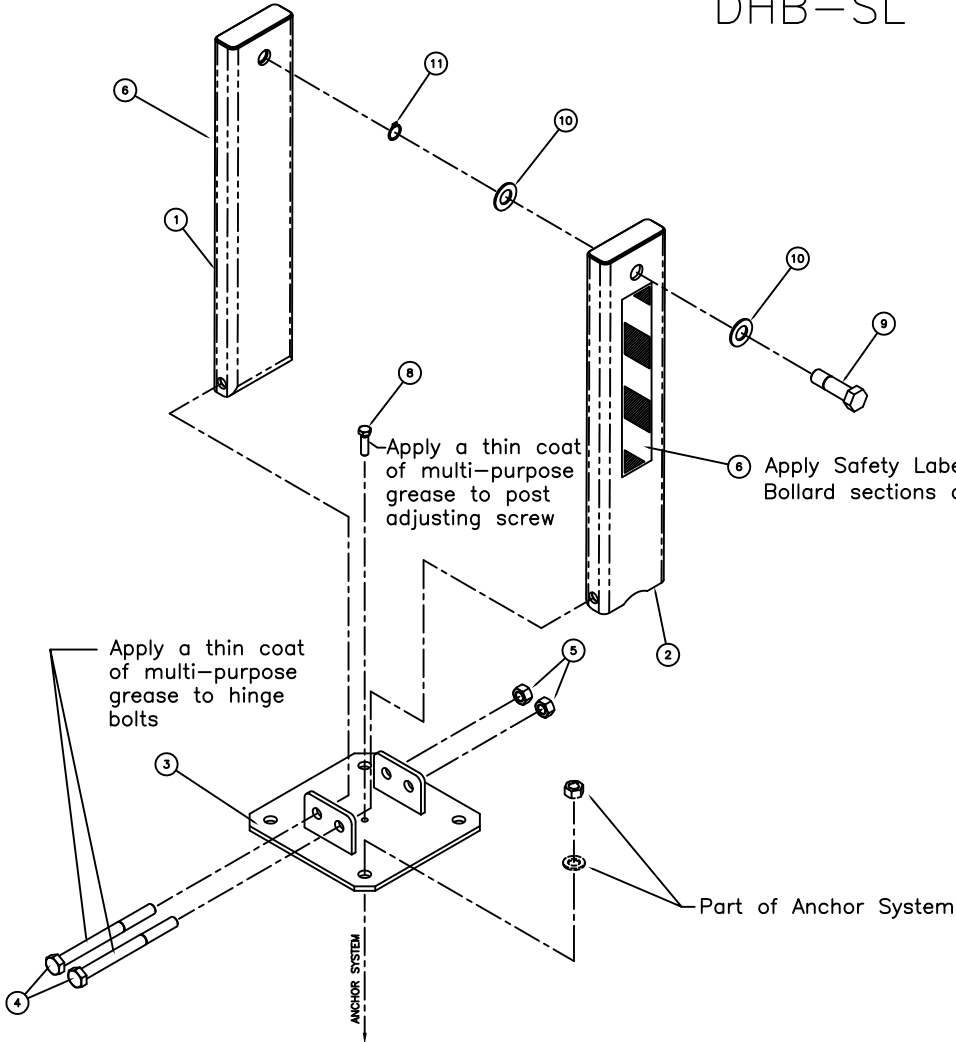
INSTALLATION INSTRUCTIONS FOR:

SCREWLOCK DOUBLE POST HINGED BOLLARD (DHB-SL)

1. Verify that all Screwlock Double Post Hinged Bollard parts are in the shipment package as shown on the "Bill of Material".
 2. Provide Screwlock Double Post Hinged Bollard Anchor System (see included Anchor System Drawing-BAS) of your choice at a location to suit your specific needs.
 3. Install SDPHB Base (Item 3) true and level on your selected Anchor System using the flat washers and hex nuts included in your Anchor System Kit. Use S.S. shims to level if needed. Torque hex nuts to Minimum 100 ft-lbs for Anchor Systems CPAS and ESAS. Torque hex nuts for other Anchor Systems to Manufacturers Specification.
 4. Install SDPHB Screw Post and SDPHB Nut Post (Item 1&2) to SDPHB Base (Item 3) using Hinge Bolts (Item 4) and Hex Nuts (Item 5) as shown. Tack Weld Hex Nuts to Hinge Bolts or Chisel Hinge Bolt Threads such that Hex Nuts cannot be easily removed.
 5. Install Captive Lock Screw (Item 9) thru UP Position SDPHB Screw Post (Item 2), with Washers (Item 10) and Retaining Ring (Item 11) positioned as shown.
 6. With Bollard Posts (Items 1&2) in the UP Position, Use a Standard Fire Hydrant Wrench or 1-1/2" Hex Head Wrench to tighten snug Captive Lock Screw (Item 9) into SDPHB Nut Post (Item 1).
 6. Install the four Labels at the locations shown.
 7. Install Post Adjusting Screw (Item 8) in threaded hole in center of DPHB Base (Item 2). Adjust Screw to keep DPHB Posts (Item 1) from rocking while in upright Padlocked position.
 8. Check the functional operation of the Hinged Bollard Posts.
- * Note: S.S. shims, tools, grease, and padlocks are not provided.

SCREWLOCK DOUBLE POST HINGED BOLLARD		THIRD ANGLE PROJECTION 		TrafficGuard®	
ASSEMBLY DRAWING		Do not scale from drawing		P.O. Box 201, Geneva, IL 60134 Date: 877-727-7347 Fax: 800-814-7194	
ZABEL ENGINEERING CONSULTING ENGINEERS		Action by		Drawing Number	
Design	WZ	Drawn	CJD	Quantity	84 Pounds
Checked	WZ	Scale	3"=1'	Drawing Date	4-1-2003
Rev. by		Date		Description	SDPHBA2
300 South Riverside Av., Aurora, IL 60009 Tel: 800-800-0000 Fax: 800-800-1007		This Drawing shall not be used nor reproduced except when authorized in writing by TrafficGuard.		Drawing Sheet: 2 of 2 Copyright 2003	

DHB-SL



BILL OF MATERIAL			
ITEM	PART #	DESCRIPTION	QTY.
1	SDPHBF1	SDPHB NUT POST	1
2	SDPHBF2	SDPHB SCREW POST	1
3	SDPHBF3	SDPHB BASE	1
4	0010	#3/4" x 8" HEX HEAD HINGE BOLT - 18-8 SS	2
5	0006	#3/4" HEX NUT - 18-8 SS	2
6	0107	SAFETY LABEL 3" x 12"	2
8	0011	#1/2" x 1 1/2" HEX HEAD CAP SCREW - 18-8 SS	1
9	2010	CAPTIVE LOCK SCREW - SS	1
10	0012	#1" FLAT WASHER - SS 18-8	2
11	0013	#1" EXTERNAL RETAINING RING - TYPE PH15-7 MO SS	1

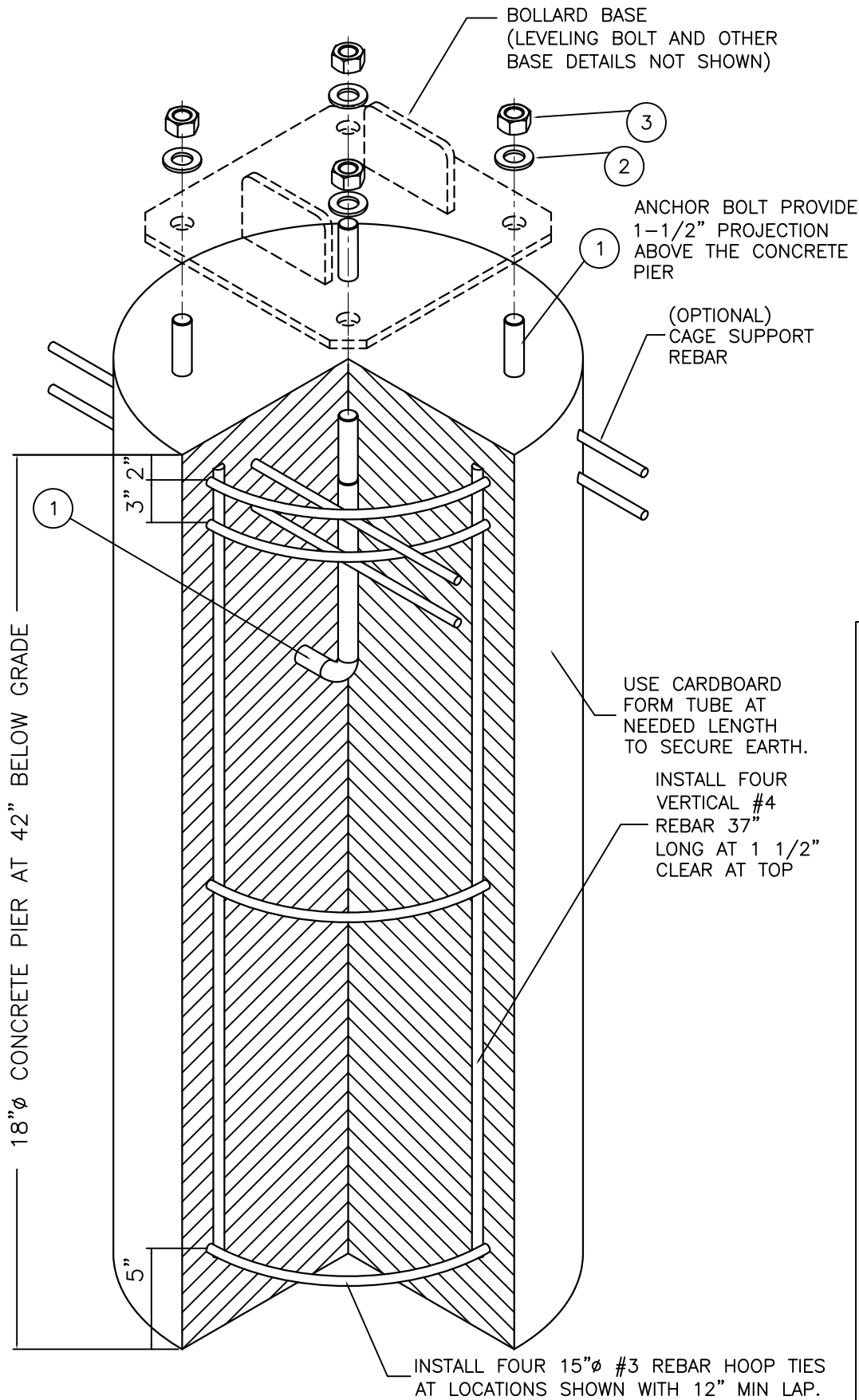
General Specifications and Notes for all Parts and Weldments

- All Steel Work shall conform to the AISC "Specification for the Design, Fabrication and Erection of Structural Steel for Buildings" - Latest Edition unless noted on the drawing.
- All Welding shall be performed by qualified welders and shall conform to the American Welding Society ANSI/AWS D1.1- Latest Edition of the Structural Welding Code - Steel
- All Material shall be new and shall be as noted on the drawing and/or in the Bill of Material. SS indicates Stainless Steel and HDG indicates Hot Dip Galvanized.
- All Painting Work shall conform to the manufacturer's specification and installation instructions and the SSPC (Steel Structures Painting Council) and as noted on the drawing.
- All hole center dimensions shall have a tolerance of 1/16 inch; and other dimensions shall have a tolerance of 1/8 inch; unless noted on the drawing.
- All work shall be packaged and shipped per specific instructions by PARS Direct.

SCREWLOCK DOUBLE POST HINGED BOLLARD		THIRD ANGLE PROJECTION	TrafficGuard®	
ASSEMBLY DRAWING		Do not scale from drawing	P.O. Box 201, Geneva, IL 60134 Bus: 877-727-7347 Fax: 800-814-7194	
Design	WJZ	Draw	WJZ	Assembly Shipping Weight
1	1.28.10	1	1.28.10	84 Pounds
Rev.	by	Date	Description	Checked
			Safety Label replaces arrows	WJZ
Drawing Date: 4-1-2003		Sheet: 2 of 2		Copyright 2003

This Drawing shall not be used nor reproduced except when authorized in writing by TrafficGuard.

CPAS12 COLLAPSIBLE POST ANCHOR SYSTEM ASSEMBLY




BILL OF MATERIAL

OPTIONAL CPAS12 KIT IF ORDERED

ITEM #	PART #	DESCRIPTION	QTY.
*	9001	CPAS12 KIT - INCLUDES THE FOLLOWING PART NUMBERS	*
1	0002	ø3/4" x 12" TYPE L ANCHOR BOLT-H.D.G.	4
2	0007	ø3/4" TYPE A FLAT NARROW WASHER GALVANIZED STEEL	4
3	0006	ø3/4" HEX NUT GALVANIZED STEEL	4

NOTE: CONCRETE, FORM AND REBAR PROVIDED BY OTHERS

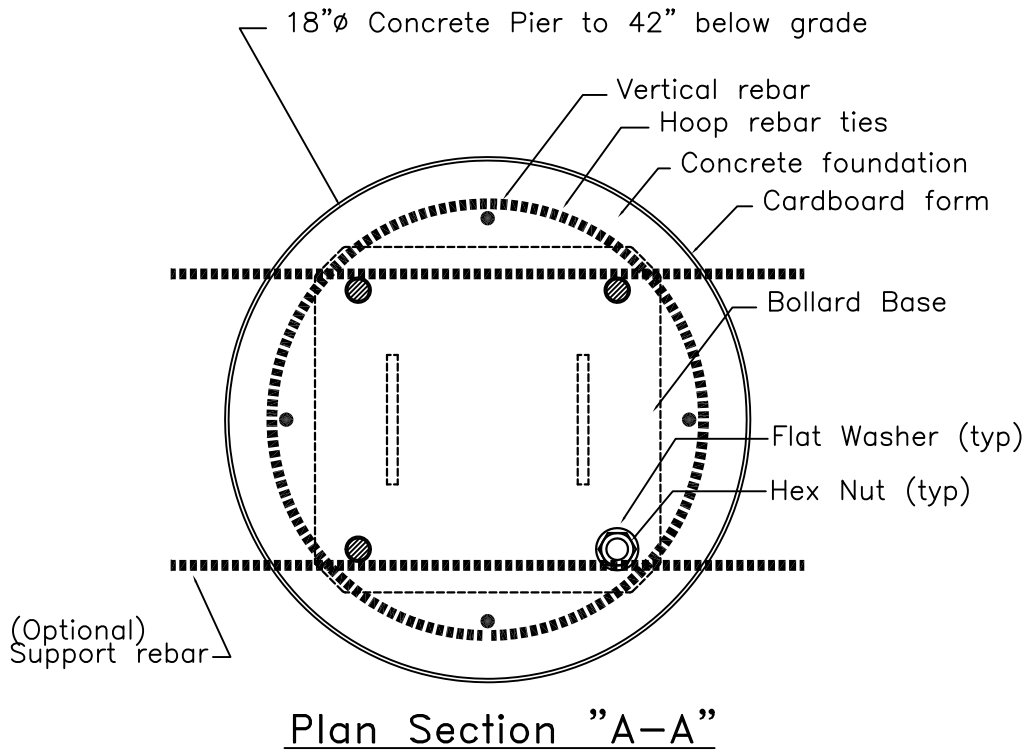
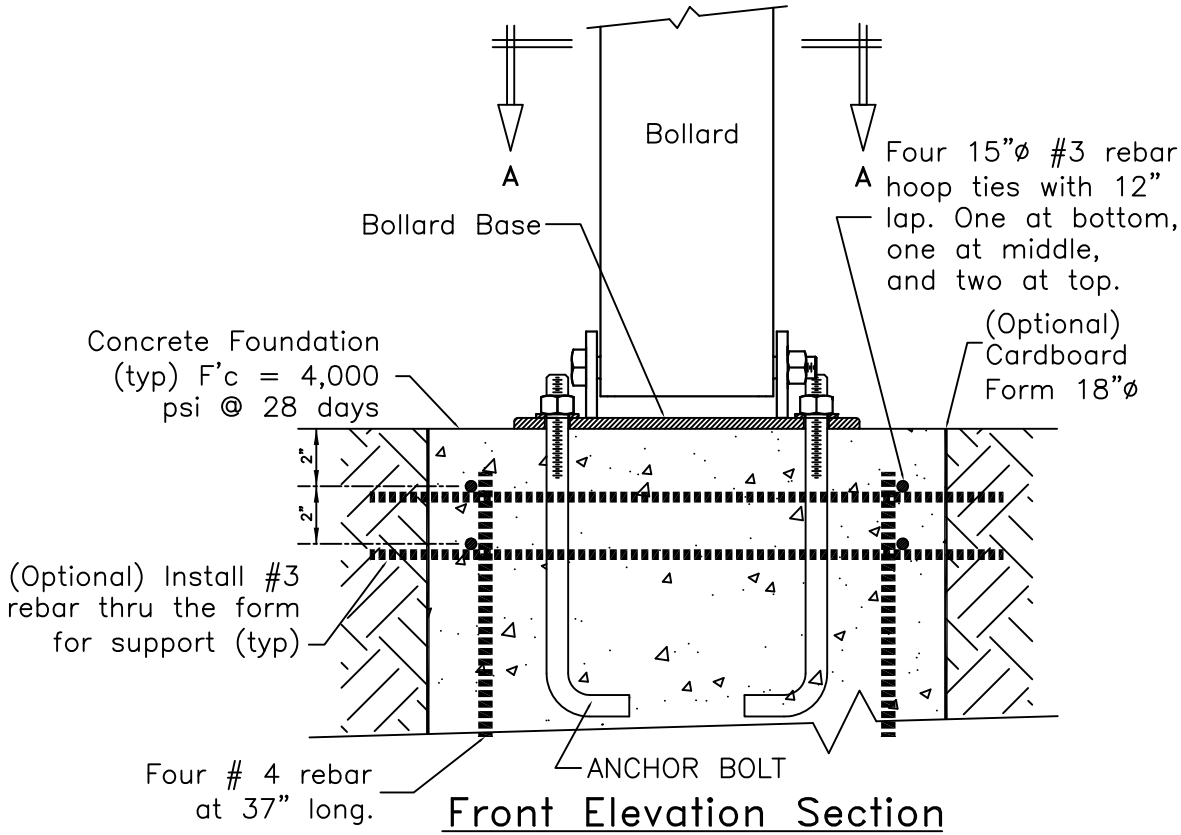
CONCRETE PIER ANCHOR SYSTEM INSTALLATION DRAWING CPAS12

THIRD ANGLE PROJECTION 
Do not scale from drawing

Toll Free **TrafficGuard®**
P.O. Box 201, Geneva, IL. 60134
Bus: 1.877.727.7347 Fax: 1.800.814.7194

Rev.	Date	by	Description	Action	by	Dwg. Scale:	Assembly Shipping Weight	Drawing Number:
2	11.14.10	wkz	Locking Pins & Note	Design	wkz	nts	84 Pounds	CPAS12
1	-	-	-	Drawn	wkz	Copywrite: 2010		
				Checked	wkz	Dwg. Size: Letter	Drawing Date: 12.10.10	Sheet: 1 of 2

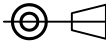
This Drawing shall not be used nor reproduced except when authorized in writing by TrafficGuard.



CPAS12 COLLAPSIBLE POST ANCHOR SYSTEM DETAILS

These Anchorage systems are designed for the noted loading based on a quality substrate material and proper installation, by the customer's contractor. The installation shall conform to the drawing and the manufacturer's instructions. The customer is responsible to determine the adequate quality of new or existing concrete and the earth substrate. The concrete shall be solid and uncracked with adequate thickness for the anchors and a compressive strength of F'_c (minimum)=4,000 pounds per square inch. The earth shall have an unconfined strength of Q_u (minimum)=4,000 pounds per square foot. If you have questionable substrates, contact your local structural engineer for appropriate anchorage evaluation and/or anchorage design. A test installation may be required to determine the adequacy of the anchorage system for your specific installation. Call for guidance, if needed.

CONCRETE PIER ANCHOR SYSTEM DETAIL DRAWING CPAS12

THIRD ANGLE PROJECTION 
Do not scale from drawing

Toll Free

TrafficGuard®

P.O. Box 201, Geneva, IL. 60134
Bus: 1.877.727.7347 Fax: 1.800.814.7194

Rev.	Date	by	Description	Action	by	Dwg. Scale:	Assembly Shipping Weight	Drawing Number:
2	11.14.10	wkz	Locking Pins & Note	Design	wkz	nts	84 Pounds	CPAS12
1	-	-	-	Drawn	wkz	Copywrite: 2010		
				Checked	wkz	Dwg. Size: Letter	Drawing Date: 12.10.10	Sheet: 2 of 2